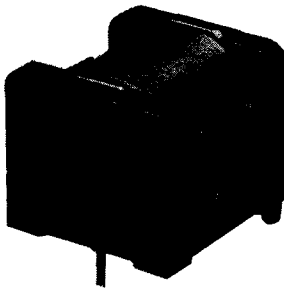
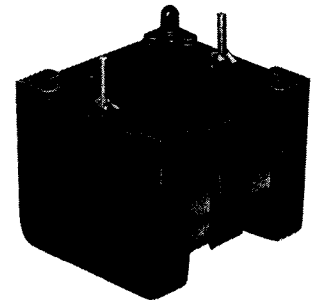
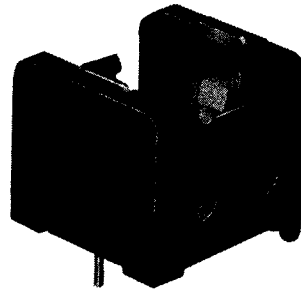


LOW PROFILE SERIES



BH 1/3N



FEATURES

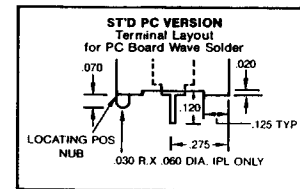
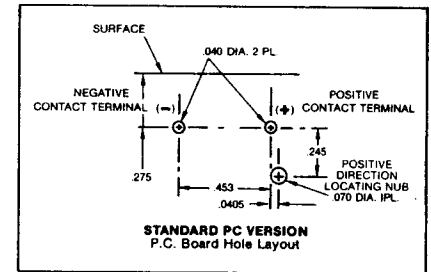
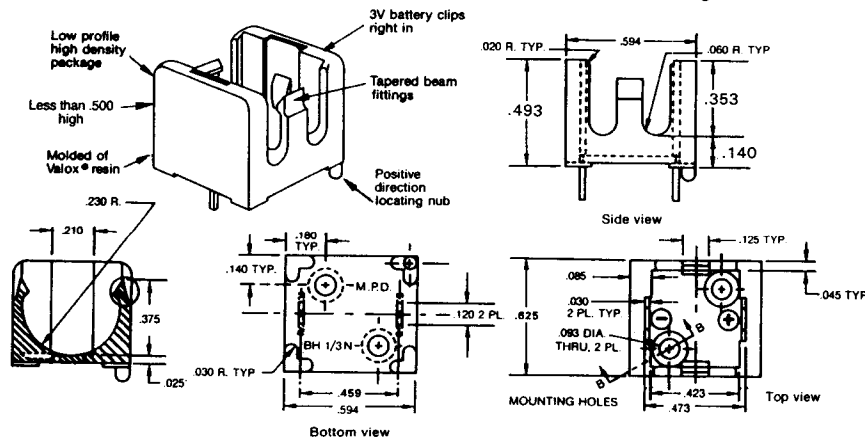
- Fits all 3-volt lithium cylinder cells standard style 1/3N.
- Printed circuit board mounting.
- Unique molded design offers easy insertion & removal of battery without desoldering or special tools.
- Special design molded base assures proper polarity of inserted battery.
- Raised mounting tabs permit free air flow around battery & insulation from extreme solder bath temperatures.
- Low profile (less than 1/2") permits PC board stacking.
- Unique tapered beam fitting design assures battery to be held in place.
- High temperature resistant U. L. 94V-O VALOX® Material.

APPLICATIONS

- CMOS, Microprocessors & Microcomputer hold-memory.
- LSI type Microcomputers, P.O.S., Preprogrammed Products
- Software memory transfer and hold.
- Electronic switchboards, telephones.
- Microwave object identification and control systems.
- Emergency Rescue beacon transmitter and marine equipmer
- Power source for real time clocks in computerized equipmer
- Industrial controls.
- Electronic communications devices.
- Telecommunication equipment.

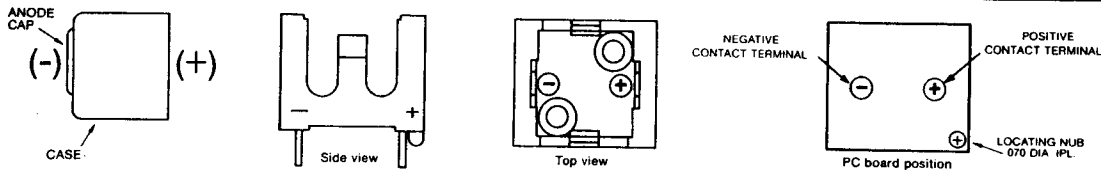
SPECIFICATIONS

| | | | |
|----------------------------|--|-------------------------------|---|
| Material: | | Dielectric strength | 560 volts/mil at 25°C for 5 sec. |
| Holder | Self-extinguishing thermoplastic Polyester, VALOX® 420 SEO | Color | Black |
| Contacts | 302 spring temper stainless steel, nickel plated | Temperature range | -55°C to +140°C. |
| Flammability rating | U.L. 94V-O | Resistance to solvents | Xylene; ethyl, butyl, methyl & propyl alcohol; ethyl acetate; refrigerants; heptane; toluene. |
| | | Weight—BH-1/3N | 2 grams |



PROPER POLARITY INSERTION OF BATTERY

U.S. Patent No. 4,495,257



A special molded locating Nub on holder is designed so installation on PC board can be done in only one positive direction.

BATTERY APPLICATION CHART: MPD MODEL BH-1/3N FITS THE FOLLOWING MANUFACTURERS' LITHIUM CYLINDER CELLS

| CELLER SIZE | CELL TYPE | CELL PART NO. | PACKAGE | UNIC. CARTRIDGE |
|-------------|-----------|---------------|---------|-----------------|
| 1/3N | CR-1/3N | 3B1230 | DL-1/3N | 2L76 |